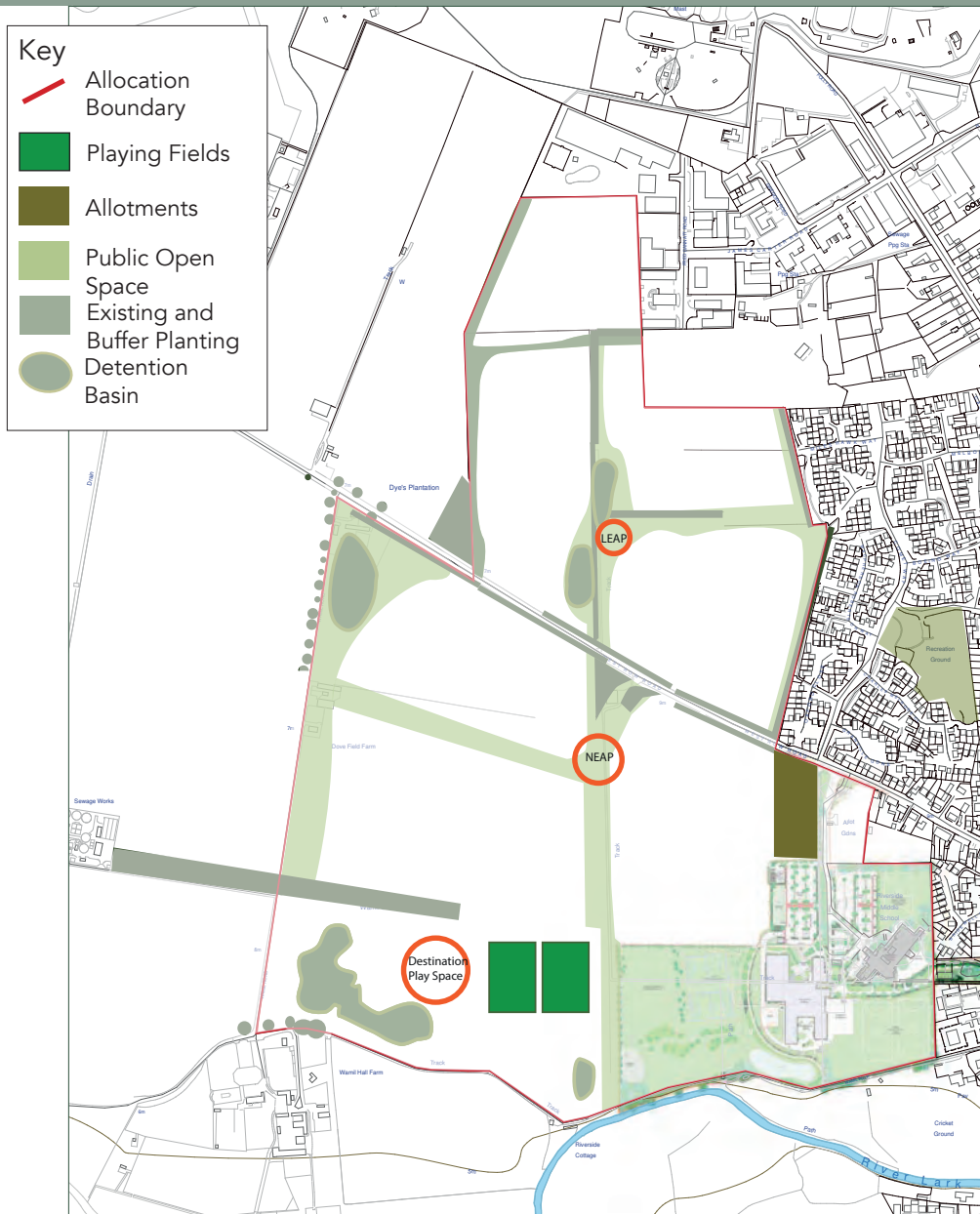


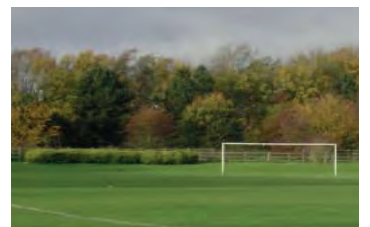
# Open Space



Informal Open Space



Formal Open Space



Playing Fields



Play Space



Allotments

## Open Space

Recreation and other forms of open space, such as allotments, parks, sports pitches, will be delivered as supporting infrastructure alongside the provision of new homes. This plan illustrates how recreation and open spaces could be provided and integrated within the wider landscape framework.

The Masterplan provides a well-connected network of multi-functional open spaces and formal provision exceeding 17 hectares of open space in addition to over 10 hectares of SANG provision. Play spaces, known as Local Equipped Areas of Play (LEAP) and larger Neighbourhood Equipped Areas of Play (NEAP), are proposed to be evenly distributed throughout the Masterplan to give good access to land north and south of West Row Road and form part of larger multi-functional open spaces. A destination play space providing natural play is included within the SANG. Provision for additional allotments is made adjacent to existing provision and sports pitches can be found adjacent to the existing leisure facilities at the Mildenhall Hub to the south east.

It is proposed to make these spaces well connected to the existing settlement through walking and cycling networks boosting recreation provision across the town.

Please provide us with your feedback concerning this information here 

Please read this exhibition material in conjunction with the virtual exhibition at [www.westofmildenhall.co.uk](http://www.westofmildenhall.co.uk)